

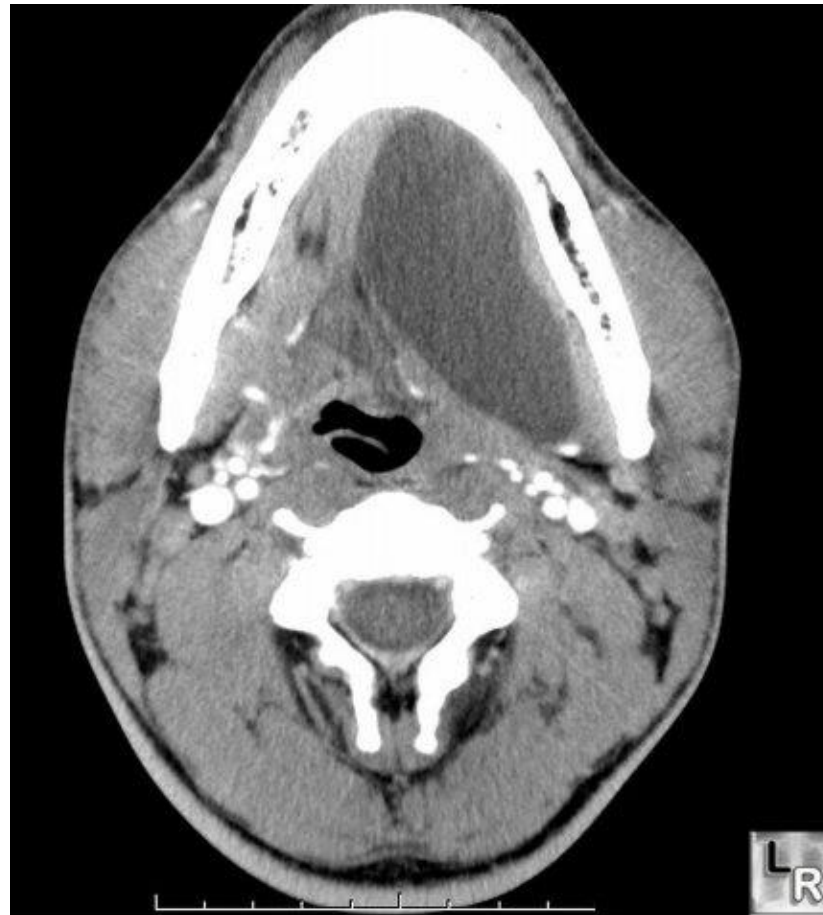


2025

**KARNATAKA RADIOLOGY EDUCATION PROGRAM**

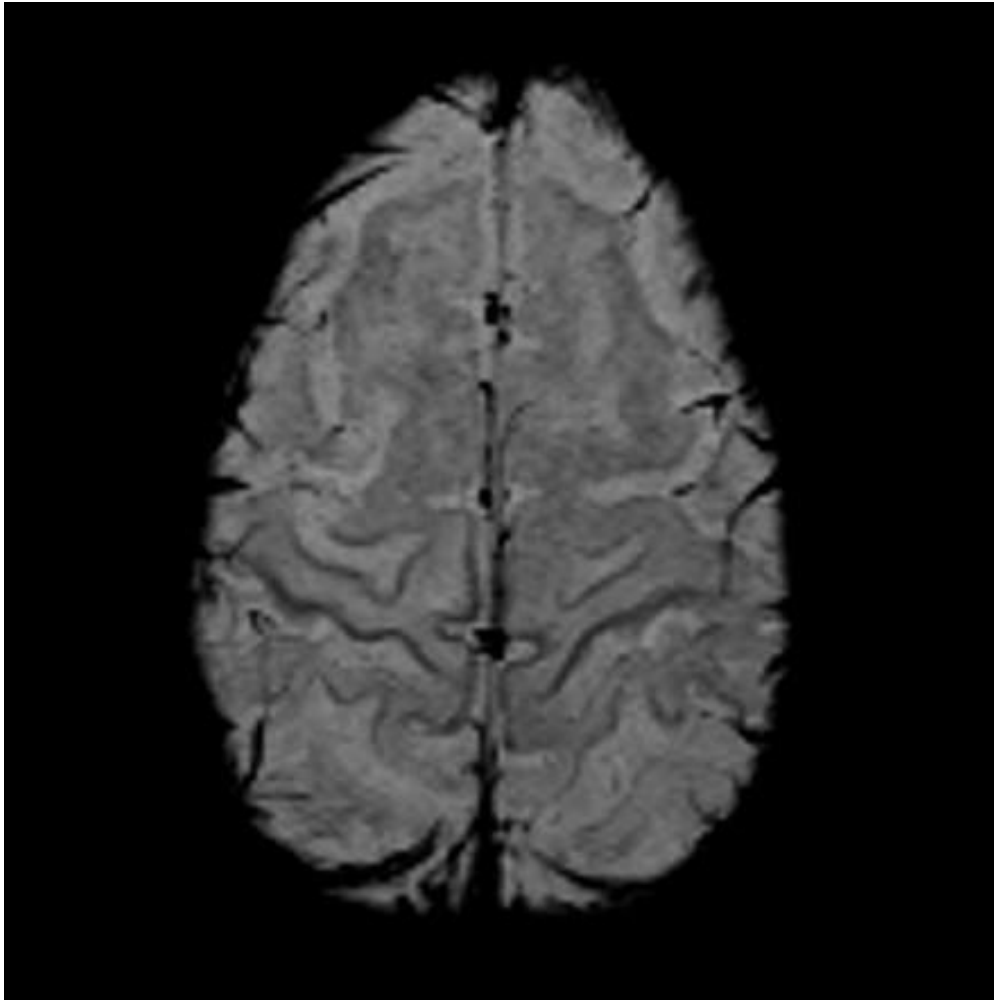
SPOTTERS

1. Diagnosis?
2. Pathology?
3. Types



1. Ranula
2. Sublingual or minor salivary gland retention cysts
3. Simple, Plunging

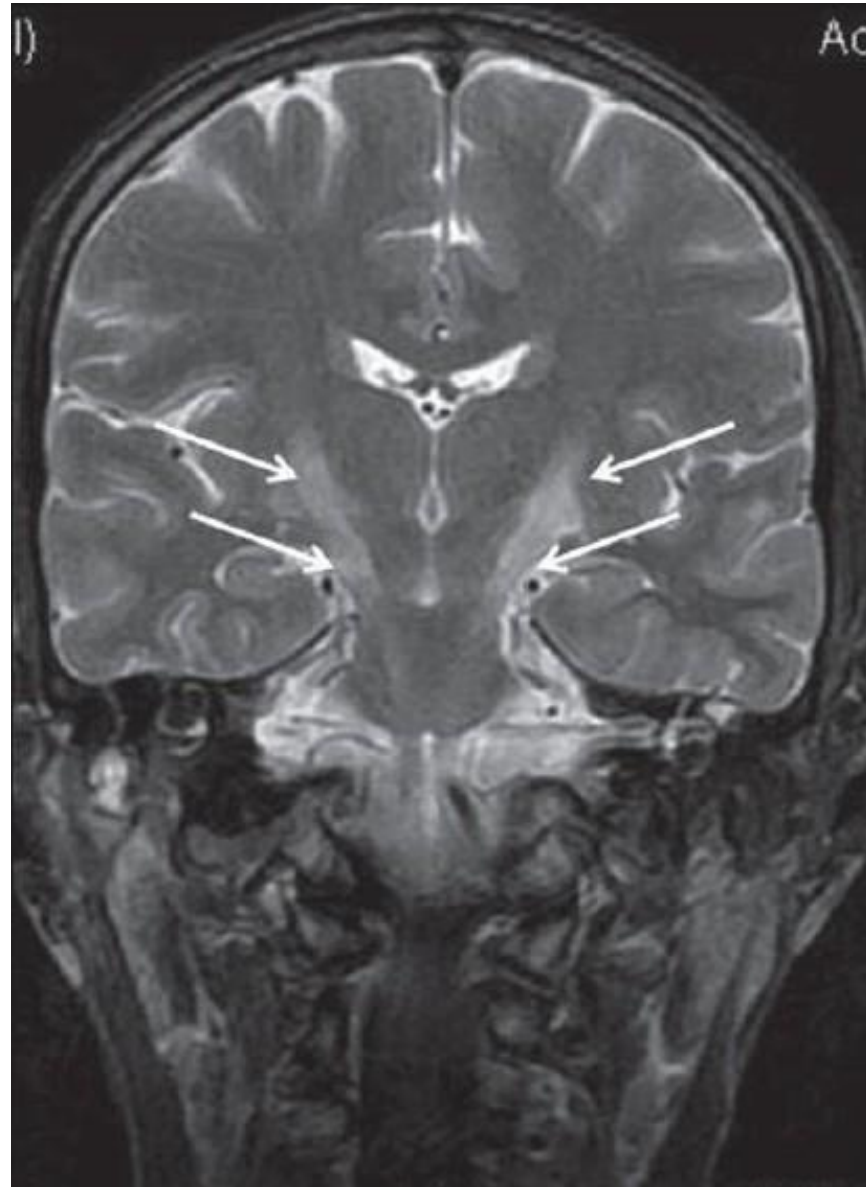
H/o progressive muscle weakness



1. Diagnosis
2. What is the sign on SWI images?
3. Which tract is involved?

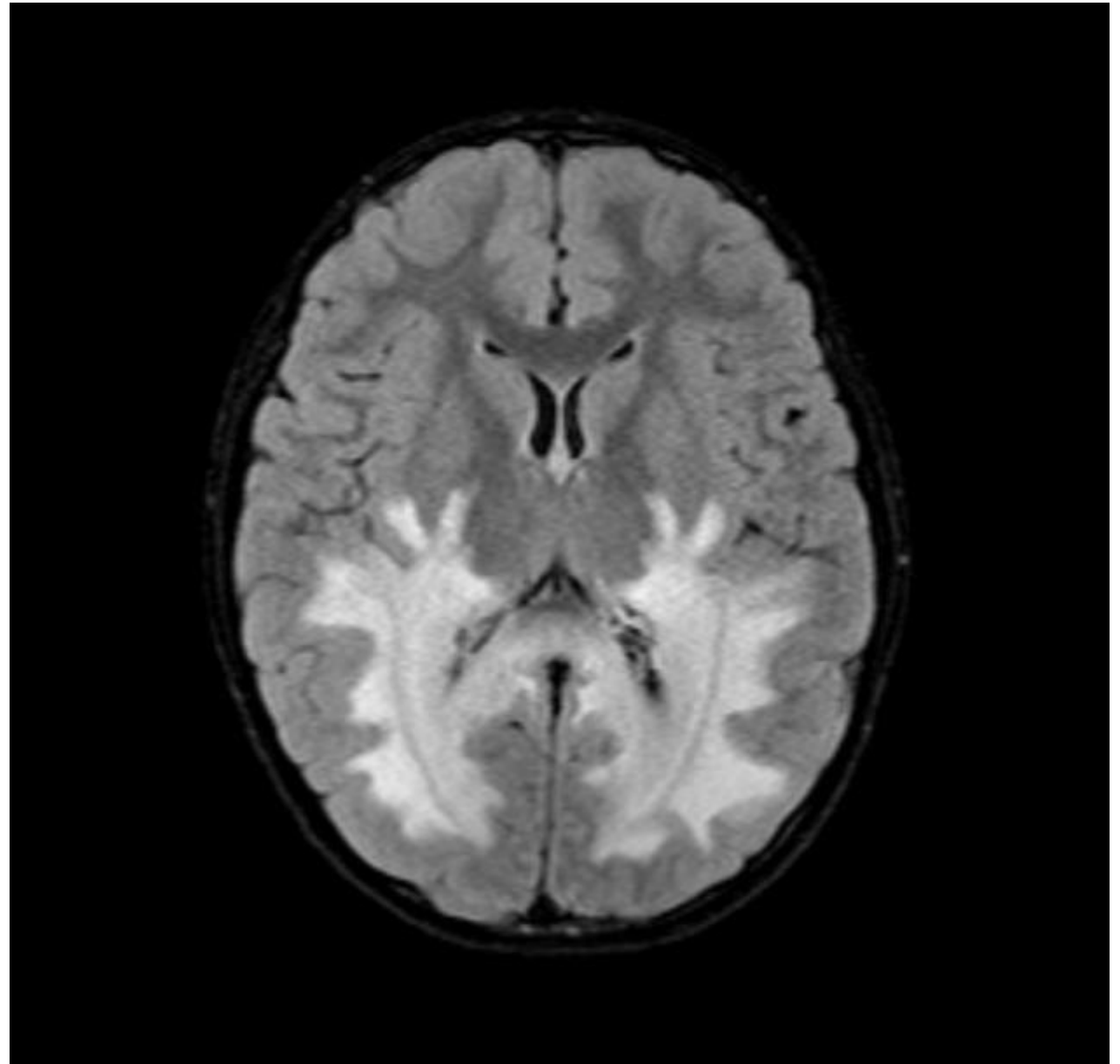
1. Amyotrophic lateral sclerosis
2. Motor band sign, Due to the deposition of iron, Loss of signals in motor cortex in SWI images
3. Corticospinal tract

→Wine glass sign



10 Y/M with progressive distortion of  
cognitive function, hearing and vision

1. Diagnosis
2. Pathology?

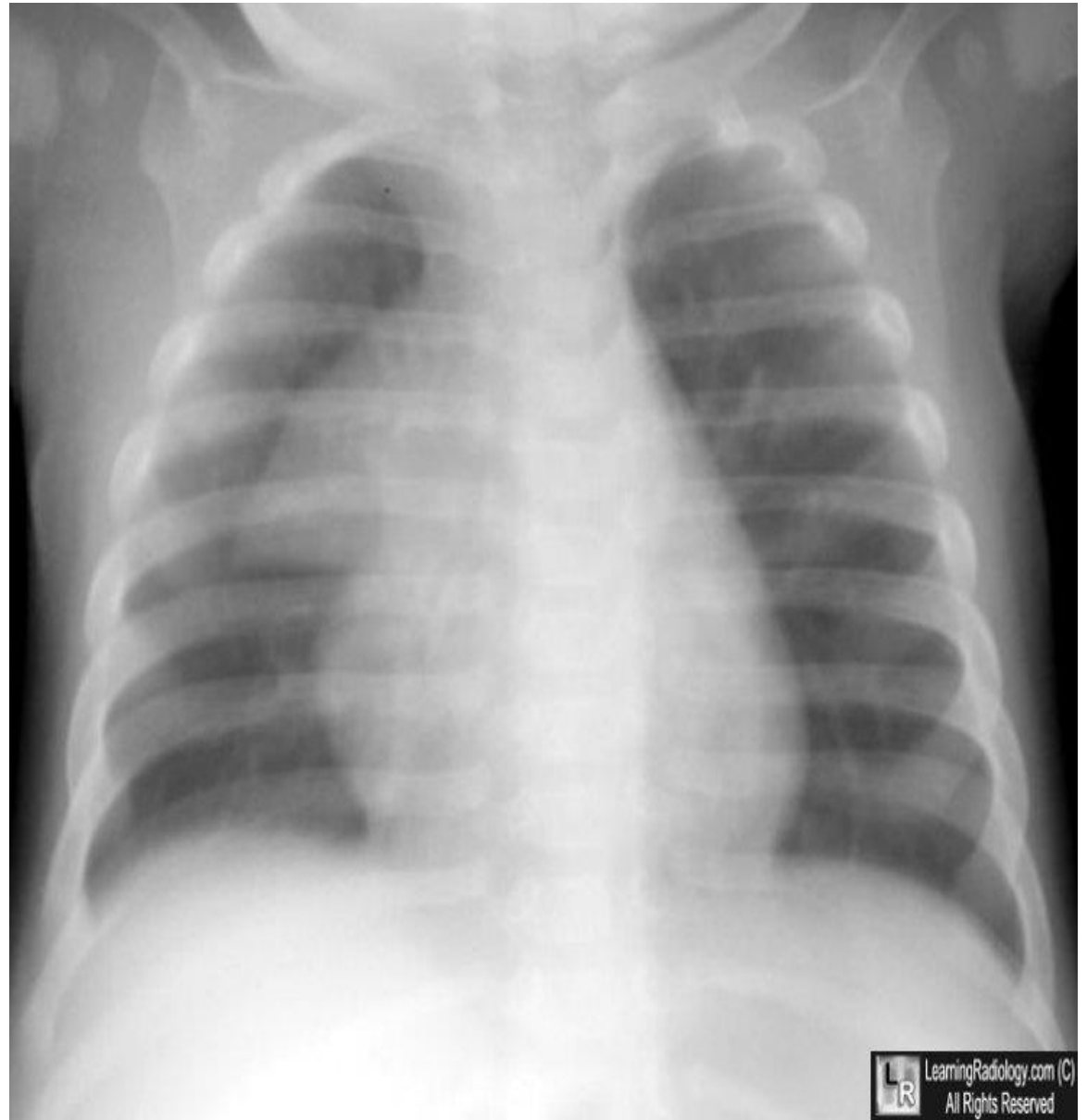




1. X linked adrenoleukodystrophy
2. Lack of oxidation of VLCFAs results in demyelination with posterior predominant pattern

1. Sign

2. Found in which condition



1. Thymic sail sign/ Spinnaker sail sign
2. Pneumomediastinum

# References

1. A Stepwise Diagnostic Approach to Cystic Lung Diseases for Radiologists  
Kyu-Chong Lee, MD,<sup>1</sup> Eun-Young Kang, MD, PhD,<sup>1</sup> Hwan Seok Yong, MD, PhD,<sup>1</sup> Cherry Kim, MD, PhD,<sup>2</sup> Ki Yeol Lee, MD, PhD,<sup>2</sup> Sung Ho Hwang, MD, PhD,<sup>3</sup> and Yu-Whan Oh, MD, PhD<sup>3</sup>
1. Whitten CR, Khan S, Munneke GJ, Grubnic S. A diagnostic approach to mediastinal abnormalities. Radiographics. 2007 May;27(3):657-71.
2. UptoDate
3. Radiopedia